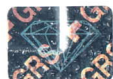


## GEMSTONE REPORT

EDELSTEINBERICHT  
RAPPORT DE PIERRE PRÉCIEUSE

No. GRS2015-100707  
Date 3rd December 2015  
Object One faceted gemstone  
Identification Natural Ruby




Weight 2.52 ct  
Dimensions 10.19 x 8.10 x 4.24 (mm)  
Cut brilliant/step (4)  
Shape pear  
Color vivid red (GRS type "pigeon's blood")  
Comment No indication of thermal treatment  
FTIR-tested

### Origin

Gemmological testing revealed characteristics corresponding to those of a natural ruby from:

Mozambique



  
Dr. A. Peretti FGG FGA

**GRS** GEMRESEARCH  
SWISSLAB® *European Geologist*

© GRS Gemresearch Swisslab AG, P.O. Box 3628, 6002 Lucerne, SWITZERLAND



2015-100707



Code Use  
See Help

INTERNET  
[www.gemresearch.com](http://www.gemresearch.com)  
[www.swissreports.net](http://www.swissreports.net)