



GRADING REPORT 25/01/2018

Report Number **181101051018**
 Shape & Cutting style **Oval Mixed**
 Measurements **16.42 x 11.83 x 7.40 mm.**
 Weight **10.27 Carats**

IDENTIFICATION

Variety **Tanzanite**
 Species/Series **Natural Zoisite**

ADDITIONAL GRADING INFORMATION

Color **Purple/Greenish blue**
 GW Color **26_00_4_1**
20_00_3_1
 Transparency **Transparent**
 Clarity grade **Loupe clean**
 Polish **Excellent**
 Symmetry **Excellent**

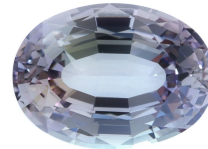
ENHANCEMENTS

No indications of heating.

COMMENTS

A rare color combination due to distinct pleochroism.

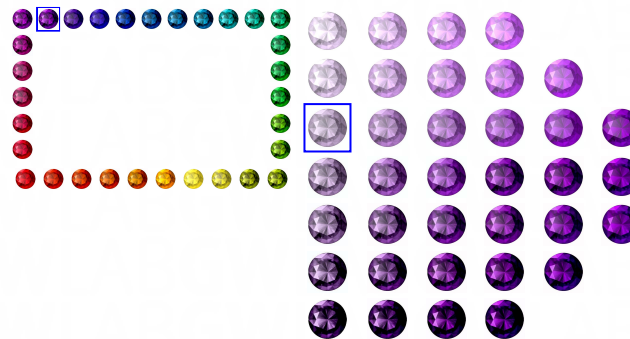
COLOR ANALISYS



Printed image/s quality may vary due to the lighting and environmental conditions, the camera used, the skills of the photographer and the printer's performance. Image/s is/are not to scale



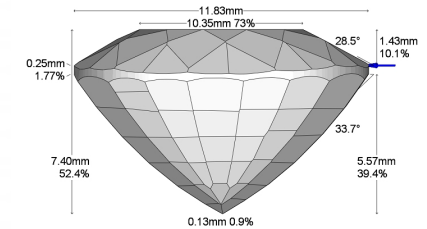
26_00_4_1



Secondary color:  20_00_3_1

The Gemewizard™ Color Reference image displayed above is found by GWLAB to most closely resemble the actual color of the gem. Please note that printed colors may look slightly different from the actual gem.

MEASUREMENTS



Powered By 

ABOUT TANZANITE

Tanzanite is a variety of zoisite, a group of crystallized calcium aluminum hydroxy sorosilicates, occurring in various shades of blue to violet. It is the birthstone of the month of December and the gemstone representing the 24th wedding anniversary.



DIGITALLY SIGNED

IMPORTANT LIMITATIONS This report contains only the characteristics of the specific item/s described herein following its/their analysis and grading according to the GWLAB™ laboratory's highest standards. The report represents the best professional opinion of the item/s described, as recorded during testing and grading, limited to the methods and equipment available by the GWLAB™ laboratory at the time of the examination. In any event, GWLAB™ and/or its workers are not responsible for any loss, profit loss, damage or expense incurred by the customer or his customers hereafter due to any error found in this report or to any differences in test results which may transpire in case of repeated testing and/or use of other standards, norms, methods or criteria other than those chosen by GWLAB™. This report is not a price guarantee, nor a valuation nor an appraisal of any kind.