



GIA

GEMOLOGICAL INSTITUTE OF AMERICA®

New York Laboratory Headquarters
580 Fifth Avenue | New York, NY 10036-4794
T: 212-221-5858 | F: 212-575-3095

Carlsbad
5355 Armada Drive | Carlsbad, CA 92008-4699
T: 760-603-4500 | F: 760-603-1814
www.gia.edu

COLORED DIAMOND GRADING REPORT

January 8, 2007

Shape and Cutting Style **Cushion Modified Brilliant**

Measurements 4.19 x 3.97 x 2.78 mm

GRADING RESULTS

Carat Weight **0.42 carat**

Color

Origin **NATURAL**

Grade **FANCY INTENSE PURPLISH PINK**

Distribution **Even**

Clarity Grade **I1**

ADDITIONAL GRADING INFORMATION

Finish

Polish **Good**

Symmetry **Good**

Fluorescence **None**

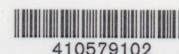
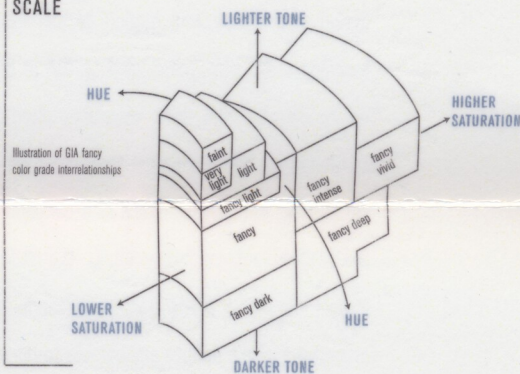
Comments:

Clouds, internal graining, surface graining and additional extra facets are not shown.

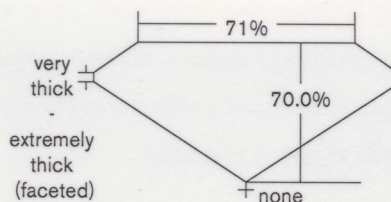
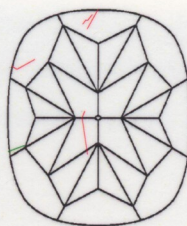
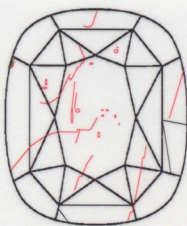
REFERENCE DIAGRAMS

GIA CLARITY SCALE	
FLAWLESS	
INTERNALLY FLAWLESS	
VVS ₁	VERY VERY SLIGHTLY INCLUDED
VVS ₂	
VS ₁	VERY SLIGHTLY INCLUDED
VS ₂	
S ₁	SLIGHTLY INCLUDED
S ₂	
I ₁	
I ₂	INCLUDED
I ₃	

GIA COLORED DIAMOND SCALE



410579102



Profile not to actual proportions.

KEY TO SYMBOLS

- Feather
- Crystal
- Needle
- Indented Natural
- Natural
- Extra Facet

Red symbols denote internal characteristics (inclusions). Green or black symbols denote external characteristics (blemishes). Diagram is an approximate representation of the diamond, and symbols shown indicate type, position, and approximate size of clarity characteristics. All clarity characteristics may not be shown. Details of finish are not shown.

This Report is not a guarantee, valuation or appraisal and contains only the characteristics of the diamond described herein after it has been graded, tested, examined and analyzed by the GIA Laboratory and/or has been inscribed using the techniques and equipment used by the GIA Laboratory at the time of the examination and/or inscription. The recipient of this Report may wish to consult a credentialed jeweler or gemologist about the information contained herein.



The security features in this document, including the hologram, security screen and microprint lines, in addition to those not listed, exceed document security industry guidelines.

IMPORTANT LIMITATIONS ON BACK
©2006 GEMOLOGICAL INSTITUTE OF AMERICA, INC.